



biamp™

Biamp & AVG

AV løsninger til mødelokaler og
klasseværelser.

Our Vision



connecting people through extraordinary audiovisual experiences

Global Reach

- Global Headquarters

- b.** • Portland, Oregon, USA

- Manufacturing

- Portland, Philadelphia & China

- R & D

- Portland, New York, Philadelphia, Boston, Brisbane, Antwerp, Horsens, Modena

- Support & Services

- USA, UK, Belgium, Spain, Germany, Italy, Denmark, UAE, India, Hong Kong, Australia

- Sales

- Represented in over 120 countries globally



connecting people through extraordinary audiovisual experiences

Local Presence

biamp.

- Team Europe
 - Over 70 team members
 - External & Internal Sales
 - Presales
 - Customer Service
 - Technical Support
 - R & D
- European HQ
 - Antwerp
- UK Office
 - Brighton
- Denmark Office
 - Horsens

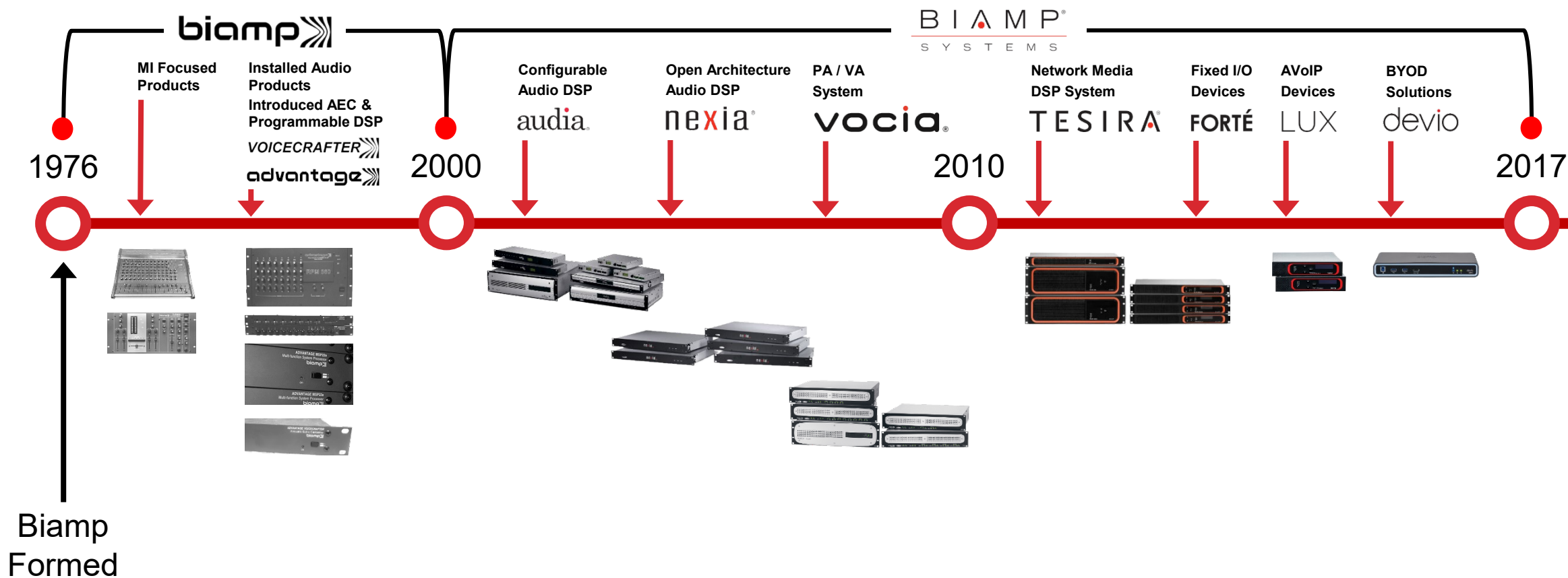


Built by Biamp

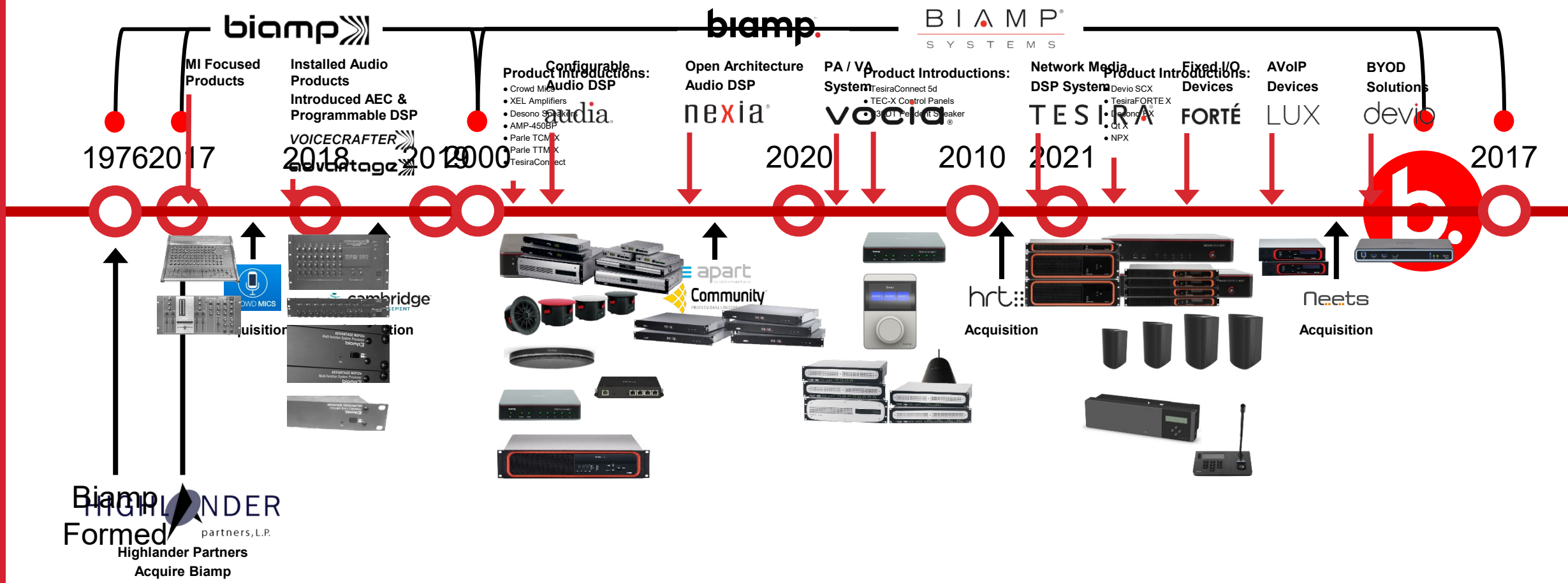
- 5-Year warranty on the majority of products
- By Biamp - For Biamp
 - In-House R&D Teams
 - Total Control of Quality
- Biamp's USA Based Manufacturing Plants
 - Portland, Oregon - Electronics
 - Chester, Pennsylvania – Loudspeakers
 - ISO9001:2008 Certified



40+ Years Of Innovative Solutions



40+ Years Of Innovative Solutions



Market Focus



- Business & Corporate
 - Meeting spaces
 - Boardrooms
 - Training rooms
 - Meeting rooms
 - Huddle rooms
 - Auditoriums



Market Focus



- Business & Corporate
 - Meeting spaces
 - Focused areas:
 - Multipurpose spaces
 - Hospitality spaces
 - Gyms & amenity spaces
 - Warehouses
 - Outdoor spaces



Market Focus



- Business & Corporate
 - Meeting spaces
 - Focused areas
 - Infrastructure systems:
 - Open Office Floors
 - Public Address
 - Life Safety



Market Focus



- Education
 - Teaching spaces:
 - Auditoriums
 - Lecture theatres
 - Classrooms
 - Seminar rooms
 - Huddle pods



Market Focus



- Education
 - Teaching spaces
 - Focused areas:
 - Multipurpose spaces
 - Hospitality spaces
 - Gyms & amenity spaces
 - Libraries
 - Outdoor spaces



Market Focus

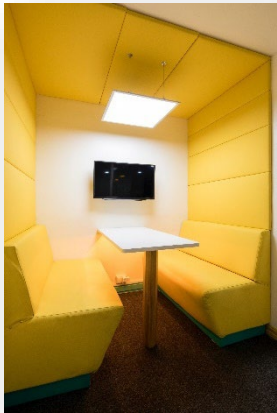


- Education
 - Teaching spaces
 - Focused areas
 - Infrastructure systems:
 - Speech Privacy & Comfort
 - Public Address
 - Life Safety



Biamp Conference Space Experience

- Products that deliver:
 - Meeting Room focused, fixed functionality solutions
 - Support for a single meeting space
 - Designed for web-based conferencing solutions like Zoom, MS-Teams and Google
 - Programming free solutions
 - Space optimised audio solutions
 - Repeatable, standardised outcomes
- Regardless of the room size



Huddle
2-4 People



Small
4-10 People



Medium
10-18 People



Large
18-50 People



Biamp teknologier

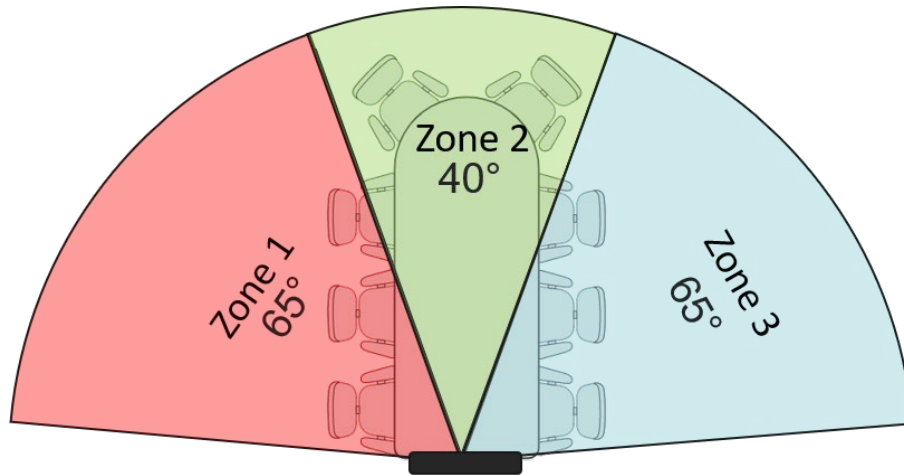
PARLÉ Microphones

- What is Beamtracking™?
 - As people talk to each other within the space the microphone's audio processor identifies their locations and ensures they can be heard
 - If a talker moves their location, the beam moves with them in real-time

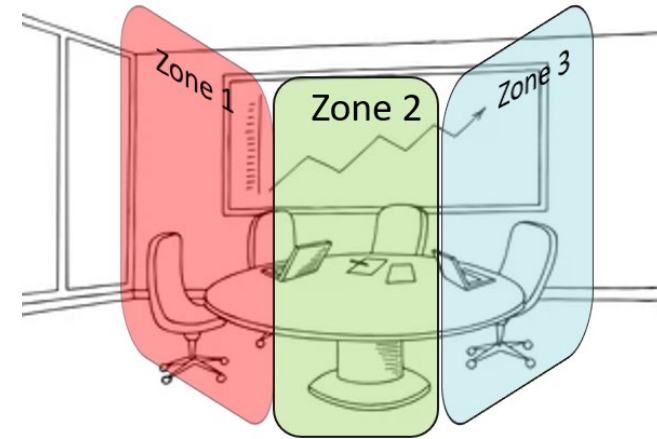


PARLÉ VBC 2500 Video Bar

- We don't simply control the pattern; we track the talker:
 - Tracking in both the horizontal & vertical with 3 independent beams
 - Compensates for different bar mounting heights
 - Follows people independent of standing or sitting



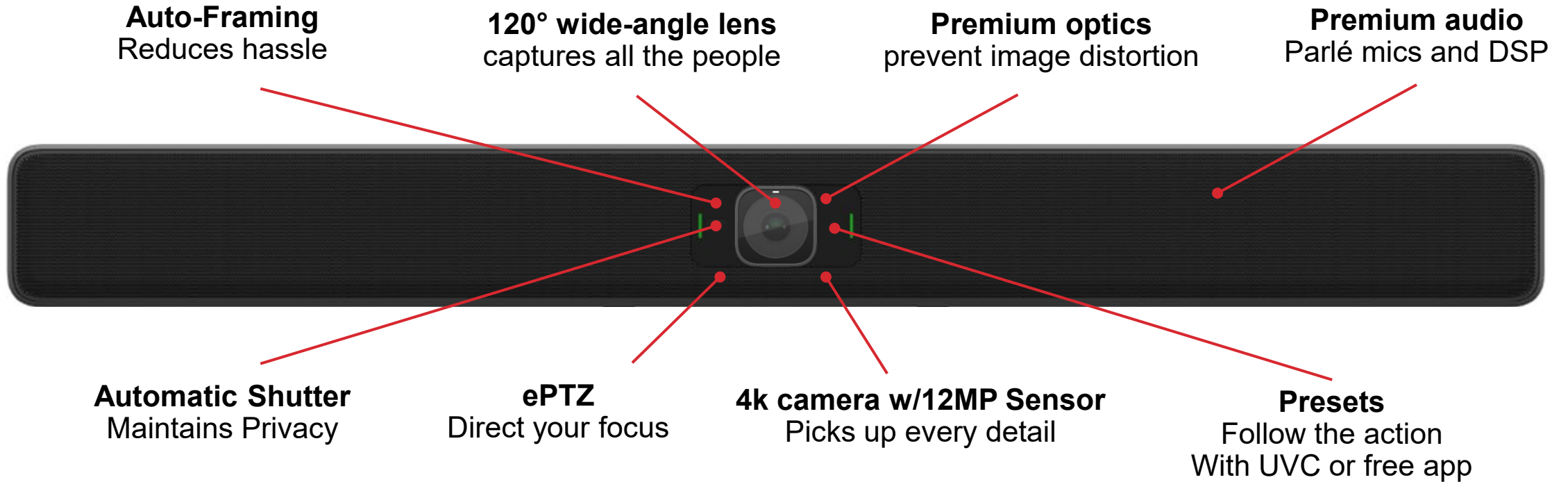
Horizontal Tracking Zones



Vertical Tracking Zones

PARLÉ VBC 2500 Video Bar

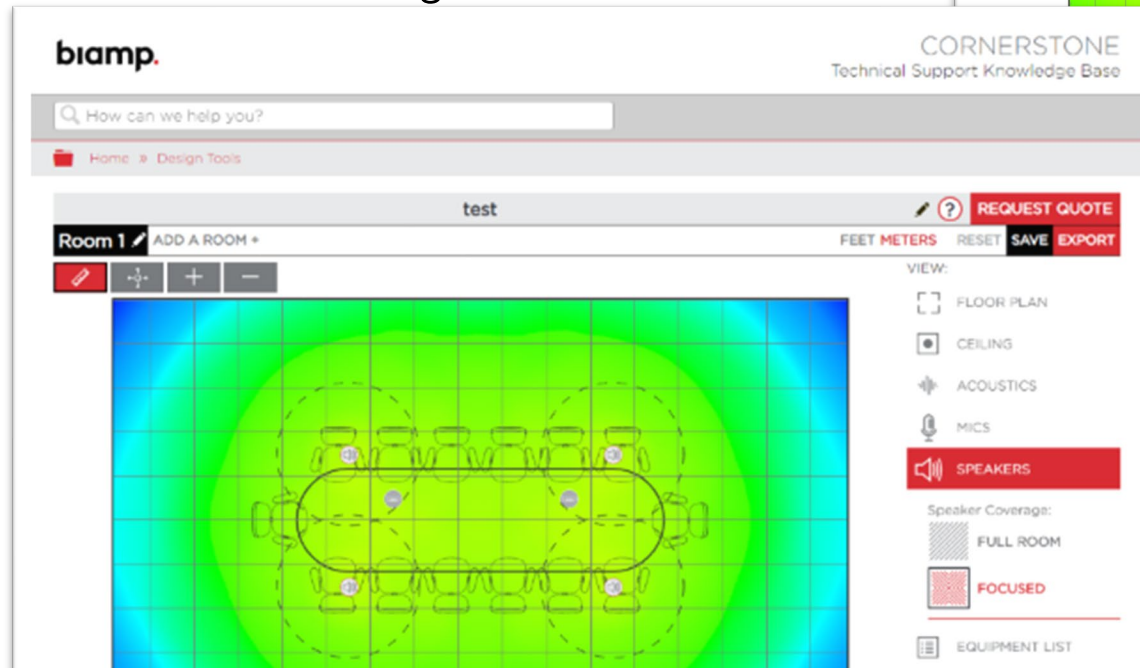
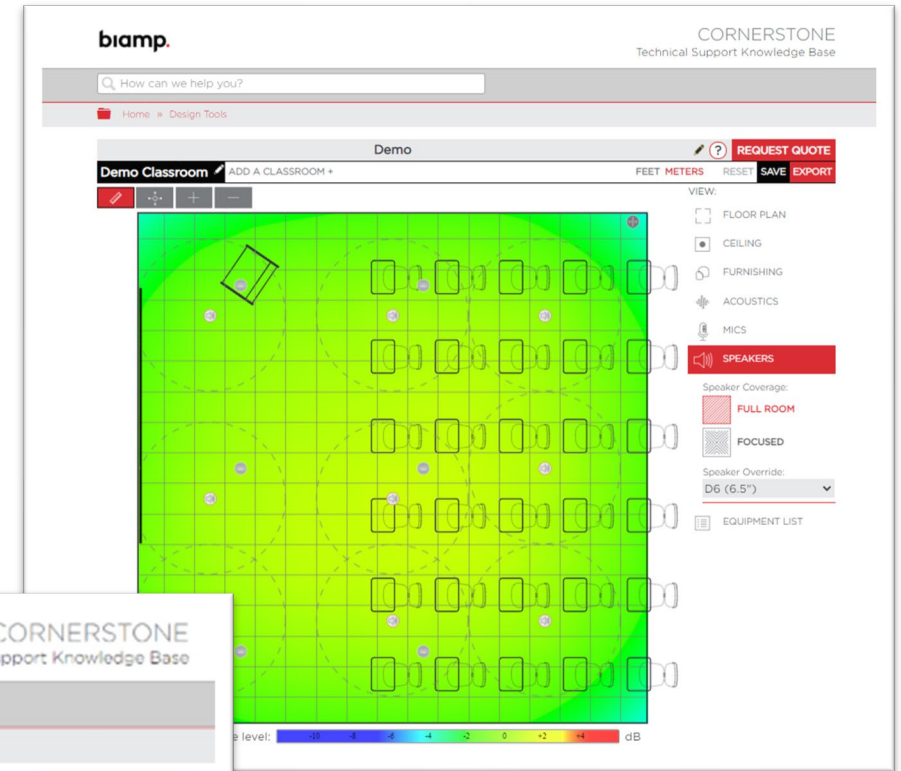
- Integrates Biamp's advanced Audio and Video solutions



biamp.ai + biamp.vi

The Room / classroom Designer

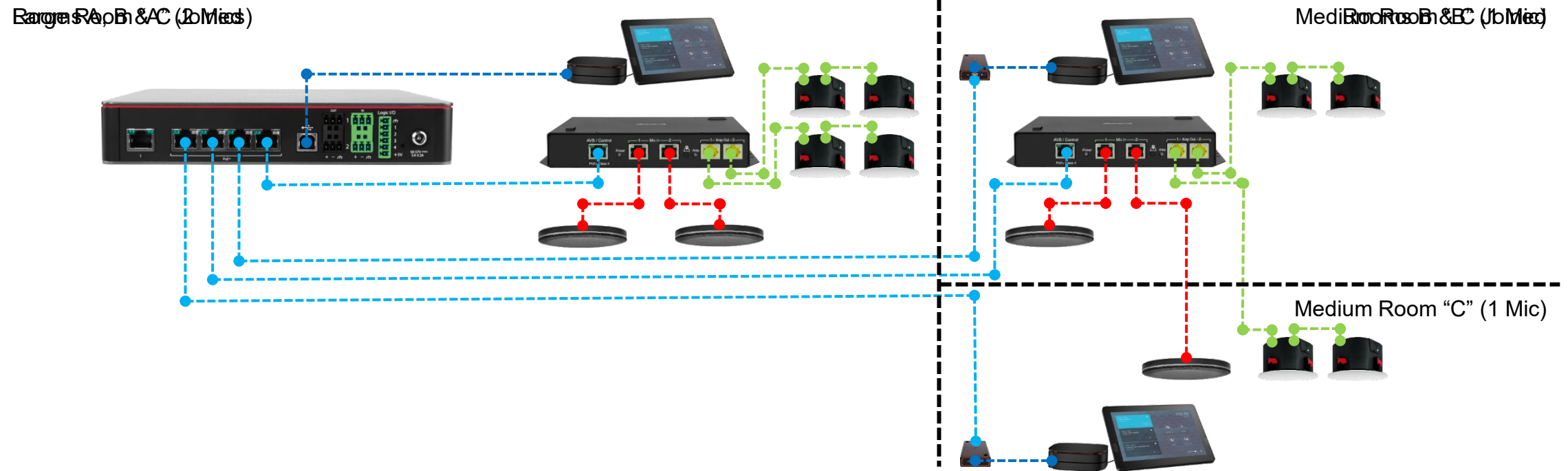
- The single design tool
 - Dimensions
 - Acoustic data
 - Delivers microphone design
 - Delivers loudspeaker design
 - Microphone
 - Fully adaptive equipment list generation
 - Delivers customer facing documentation
- Insures a



Tools

PARLÉ Microphone Deployment

- System expansion



IMPERA ControlPads

- Simple user interface & control processor in a single package



IMPERA OSCAR



IMPERA ECHO+



IMPERA UNIFORM



IMPERA ECHO



IMPERA SIERRA II

APPRIMO Touch Panels

- Touch8i – All-In-One solution:
 - Touch panel and control processor in a single device
 - Controls up to 20 IP controlled devices
 - No “traditional” control ports
 - PoE Powered
 - Tabletop and wall mounting options



APPRIMO TOUCH 8i



caffeinated

An aerial photograph of a modern building's interior. A large, curved wooden staircase with a light-colored wood finish and dark metal railings dominates the left side of the frame. To the right of the staircase, several people are seated at small, round white tables with orange chairs. The floor is a light gray, and a large concrete pillar is visible on the right side. The overall atmosphere is bright and modern.

Tak for opmærksomheden

Claus Behrens

Regional Sales Manager

E: claus.Behrens@biamp.com

P: +45 25262606

W: www.BIAMP.com