



OPTIMER DIT ONLINE MØDE MED AVG OG POLY

Rasmus Skov
Channel Manager, Denmark



WHO WE ARE

plantronics®



Polycom™



END TO END PORTOFLIO AND SERVICES



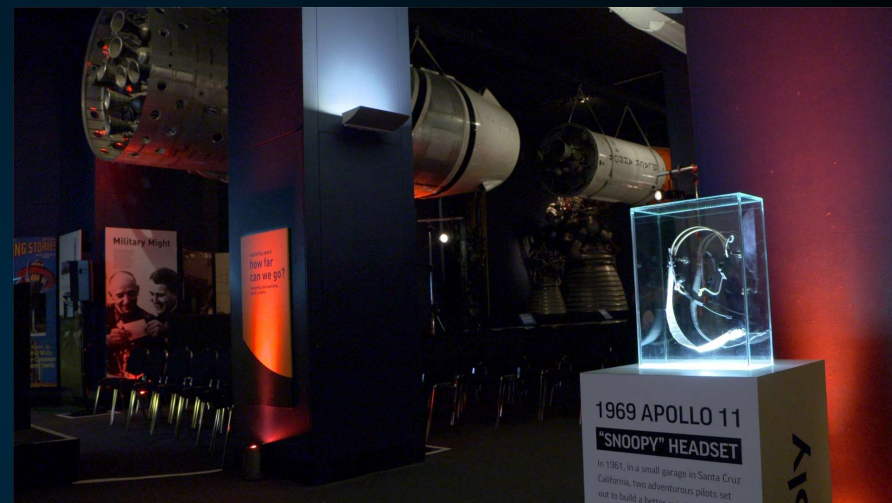
POLY GLOBAL SERVICES

POLY REALCONNECT (CVI) - POLY LENS - POLY+



WHY DO ENTERPRISES CHOOSE POLY?

- **Broadest** portfolios within the industry, combining audio expertise and powerful video and conferencing capabilities to deliver an outstanding experience.
- More certified devices than any other vendor – Microsoft Partnership is **beyond just devices** certification and includes Master and Systems Integrator Partner.
- **Global Presence** –Managed and professional services, along with device support (Home or Office)



The first words of Commander Neil Armstrong as he stepped onto the moon were transmitted through his **Plantronics MS50** headset: *"That's one small step for [a] man, one giant leap for mankind."*

Slide nummer 3

GU0

Would this not move up under the who is poly?

Guest User; 2022-05-31T18:49:58.063

An aerial photograph of a rocket launch serves as the background. A large, bold red number '60' is centered over the image. A red arrow starts from the bottom left of the '60' and points diagonally upwards towards the top right, passing behind the text 'YEARS OF INNOVATION'.

60 YEARS OF INNOVATION



MAKE HYBRID WORK, WORK!

OFFICE



Early pandemic

Quick fix with USB devices in the meeting rooms



During pandemic

Upgraded meeting room with native Teams Rooms solutions



Post pandemic

Hybrid work is here to stay, updating meeting rooms to ensure equality

Updating size of spaces

Focus on acoustic

MAKE HYBRID WORK, WORK!

HOME



Early pandemic

Found a way to work from home



During pandemic

Our work moved into our personal space



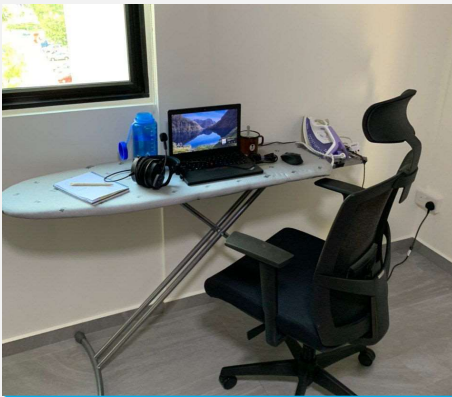
Post pandemic

Ensure employees have the right equipment to perform the best



MAKE HYBRID WORK, WORK!

HOME



Early pandemic

Found a way to work from home



During pandemic

Our work moved into our personal space

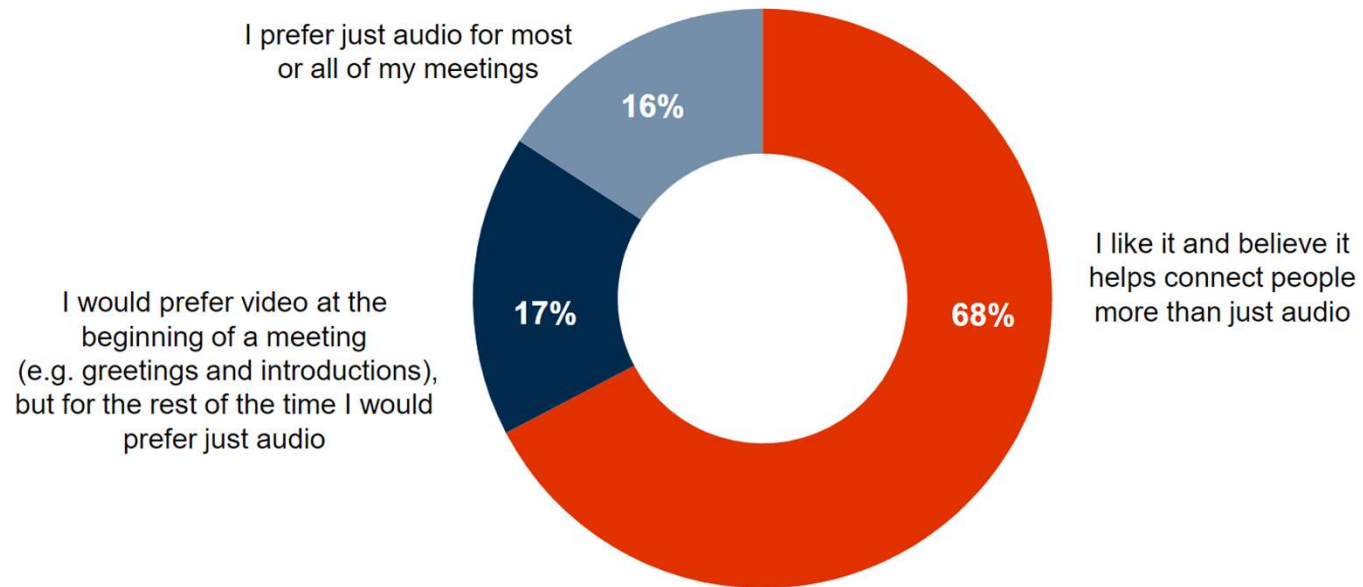


Post pandemic

Ensure employees have the right equipment to perform the best



WHY VIDEO



POLY VIDEO FAMILY

All-in-one USB STUDIO



Best low-cost alternative for BYOD workflows.

All-in-one video bars STUDIO X SERIES



Studio X30: best for huddle rooms and small offices.

Studio X50: best for small to medium sized rooms.

Studio X70: best for large rooms.

Modular solution for larger rooms G7500



Best for large customized conference rooms.

Smart Systems MICROSOFT TEAMS



Best for rooms of all sizes running Microsoft Teams Rooms.

CHOOSE YOUR DESIRED PLATFORM



POLY VIDEO APP

For flexibility with nearly any cloud video service

Easily connect into cloud video service through H.323 and SIP support

] pexip[



ZOOM APP

For a rich, native full-featured Zoom Rooms experience

Poly Studio X family becomes a Zoom Room with no PC or Mac

zoom

OR ANOTHER EXPERIENCE?

Poly is certified by Barco and Mersive

Poly BYOD devices and Poly Studio X family easily enables your desired enduser experience



THE MICROSOFT EXPERIENCE

android



Windows



Lenovo
DELL

TEAMS APP

Poly for an all-in-one Microsoft Teams

Poly builds the perfect Hybrid Meeting
Room Environment for Microsoft
Meet Demands – One UE Only



POLY OS PLATFORM

The new and Flexible Video Conferencing



Management

Applications

] pexip[

zoom



Microsoft Teams

DEVICE MODE



GoToMeeting
by LogMeIn

StarLeaf

Operating System



polyOS

Hardware Capabilities



Dual Monitor



Touch Screen
annotation

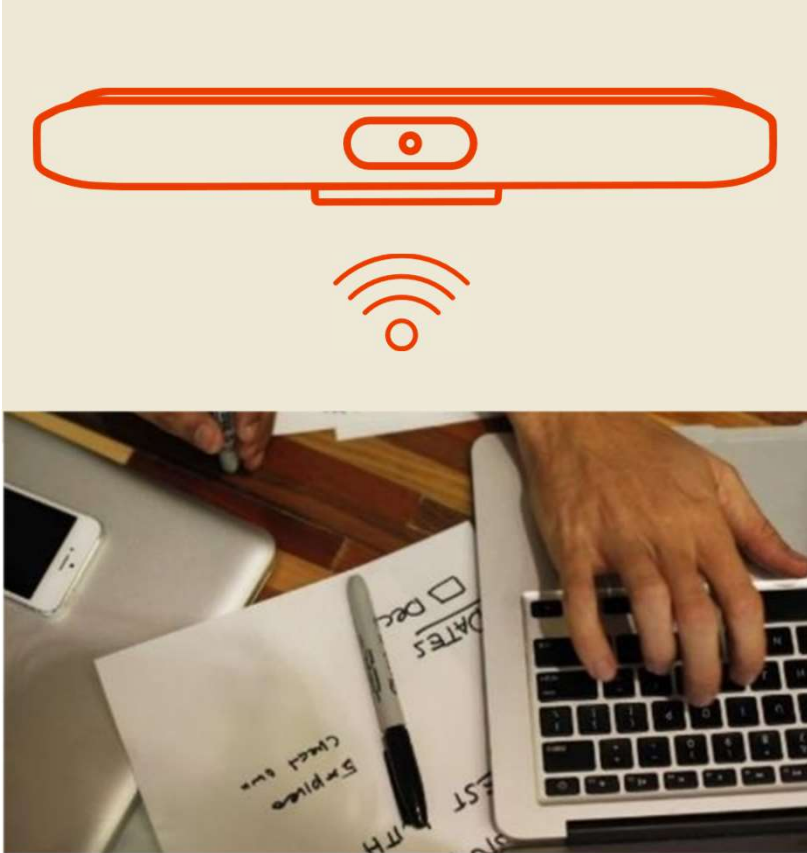


BYOD

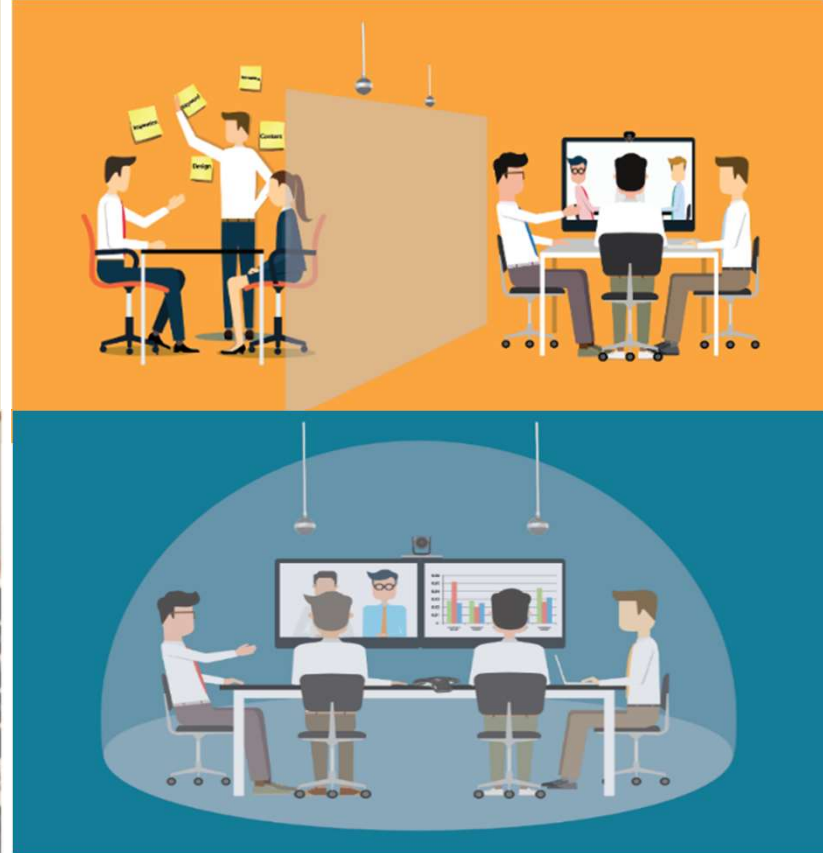


ELIMINATING AUDIO DISTRACTIONS FOR EVERYONE

NoiseBlockAI



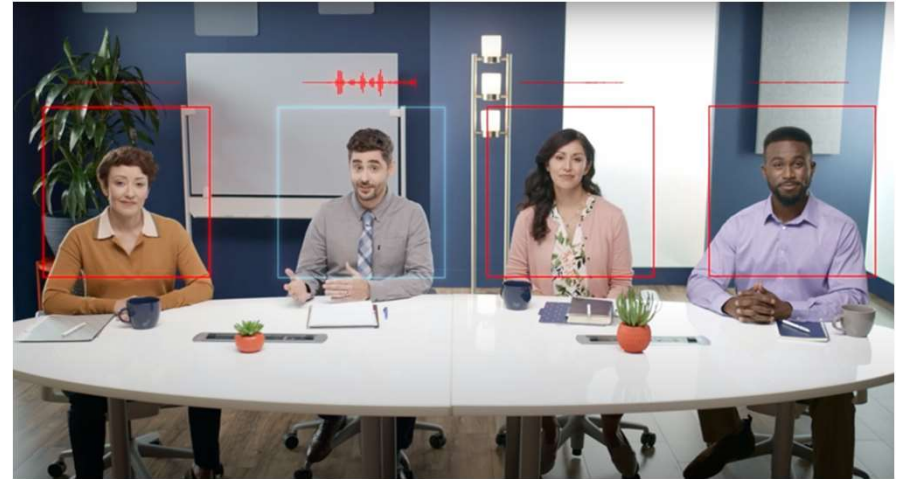
Acoustic Fence



POLY DIRECTOR AI

Poly DirectorAI is our proprietary suite of AI technology that provides end-users with an automatic camera experience during their meetings

- Automatic framing mode for group or speaker
- Presenter Mode
- Equal representation of room participants in the room of any size
- Engaging far end experience as the view is optimized
- Works well with any of Teams Rooms layout



DirectorAI intelligently frames group or speaker





SMALL ROOM

POLY STUDIO ROOM KIT

YOUR COMMUNICATION NEEDS

- High-performance video and audio for meetings and presentations.
- Connections that make meetings and conversations feel natural.
- Easy-to-use solutions that don't require a lot of time or setup.
- Collaboration tools that automatically tune out distractions.
- One-touch content sharing capabilities.



 Windows



Small Room Kit with Poly Studio

android



Poly Studio X30, TC8

]pexip[
 Microsoft Teams



MEDIUM ROOM

POLY STUDIO ROOM KIT

YOUR COMMUNICATION NEEDS

- Getting the meeting up and running quickly is a must.
- To hear and be heard, see and be seen.
- Easily share screens, content and multimedia.
- Keep outside distractions at a minimum to help everyone focus.



 Windows



Medium Room Kit with Poly Studio

android



Poly Studio X50, TC8

]pexip[
 Microsoft Teams



LARGE ROOM

POLY STUDIO ROOM KIT



YOUR COMMUNICATION NEEDS

- Collaboration is key, so easy access to favorite platforms is a must.
- Being able to share content must be easy, quick and seamless.
- Hear and be heard, see and be seen.
- Keep outside distractions at a minimum to help everyone focus.



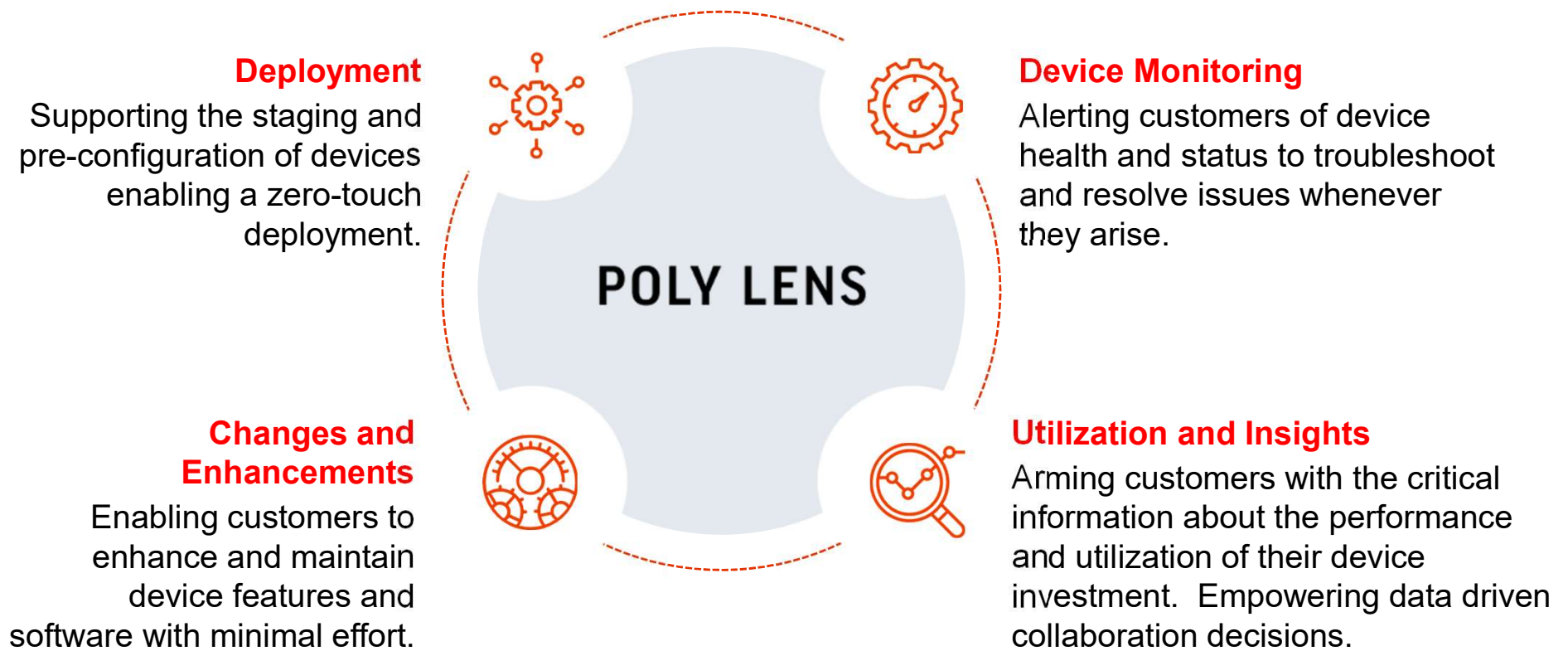
Large Room Kit with Poly Studio E70



Poly Studio X70, TC8*

*Pending certification

POLY LENS – AVAILABLE TO ALL

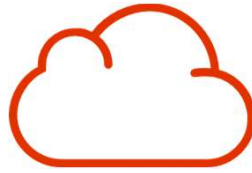


BENEFITS AND FEATURES



UNLIMITED, 24x7 GLOBAL TECHNICAL SUPPORT

Help how and when you need it -
phone, chat, web, live video.



ECOSYSTEM CLOUD PARTNER SUPPORT

Single support call puts you on
the path to resolution.



ADVANCE HARDWARE REPLACEMENT*

Replace your device the next business
day, before returning your faulty one.



PROFESSIONAL SERVICES DISCOUNTS

Save your business time and money
with exclusive discounts.



UPGRADED POLY LENS

Premium software for IT
admin and end users alike.



* [Service Policy](#), [Advance Parts Replacement Information](#)

Takk ത്ത
Dhanyavād Tack
Bedankt Grazie Arigatō Shukran
Tak **Gracias** спасибо
Kop Khun 감사합니다 Dziekuje
THANK YOU Xièxiè
Teşekkür Ederim Danke
Merci

STUDIO X FAMILY FEATURES

Poly Studio X30



Poly Studio X50



Poly Studio X70



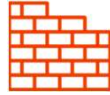
Form Factor W x H x D	All-in-One 442 x 63 x 62 mm	All-in-One 762 x 102 x 102 mm	All-in-One 840 x 136 H x 117 D
Target Room Size	Huddle	Small to Medium	Medium and Large Rooms
Monitors	Single	Dual	Dual
Speakers	Mono	Stereo	2-way Stereo plus Bass ports
Microphones	4 MEMS	3 MEMS / 2 Cardioid 2 nd Order Mics	2 MEMS / 2 Cardioid 2 nd Order Mics
Camera	Single 4K/30 120° FOV 4x zoom	Single 4K/30 120° FOV 5x zoom	Dual 4K+/30 120° + 70° FOV 7.3x zoom
Camera tracking/Framing	Yes	Yes	Yes
Air Quality Sensors	No	No	Yes (post-FA)
Content Collaboration	HDMI Input Device Mode	HDMI Input Device Mode	HDMI Input Device Mode (Post FA)
Enterprise Management	Zero-Touch On-Boarding Device Management Analytics Updates	Zero-Touch On-Boarding Device Management Analytics Updates	Zero-Touch On-Boarding Device Management Analytics Updates

AUDIO EXPERIENCES



Poly's legendary audio

with crisp, room-filling sound made possible by an innovative acoustic chamber design



NoiseBlockAI

blocks out unwanted noise and distractions, made possible by innovative machine learning algorithms



Advanced 2nd order gradient microphone array

clearly picks up all voices in the room



Acoustic Fence technology

captures only the voices within a defined zone in open workspaces



INTRODUCING THE POLY STUDIO E70 CAMERA

Intelligently designed camera for smarter hybrid meetings

- The Poly Studio E70 is a first of its kind intelligent camera that brings mind-blowing video quality, state-of-the-art audio features, and advanced analytics to modern meeting rooms.
- Dual lenses with 20-megapixel 4K sensors provide life-like detail
- Poly DirectorAI technology creates an unparalleled video experience, perfect for hybrid working environments.
- Coming to the July 1 pricelist
- MSRP \$3,499 *Price could vary in different countries



POLY STUDIO E70 DETAILS

CAMERA FIRST, BUT SO MUCH MORE

4 MEMS microphones
for advanced audio
features

LOOK AT ME

Dual lenses (120/70 FOV
20MP 4K+) ensure everyone
in the room is seen clearly

ADVANCED CAMERA FRAMING

Advanced algorithms power the most
advanced automated camera framing
on the market with group framing and
speaker tracking

PRIVACY MATTERS

Motorized, integrated electronic
privacy

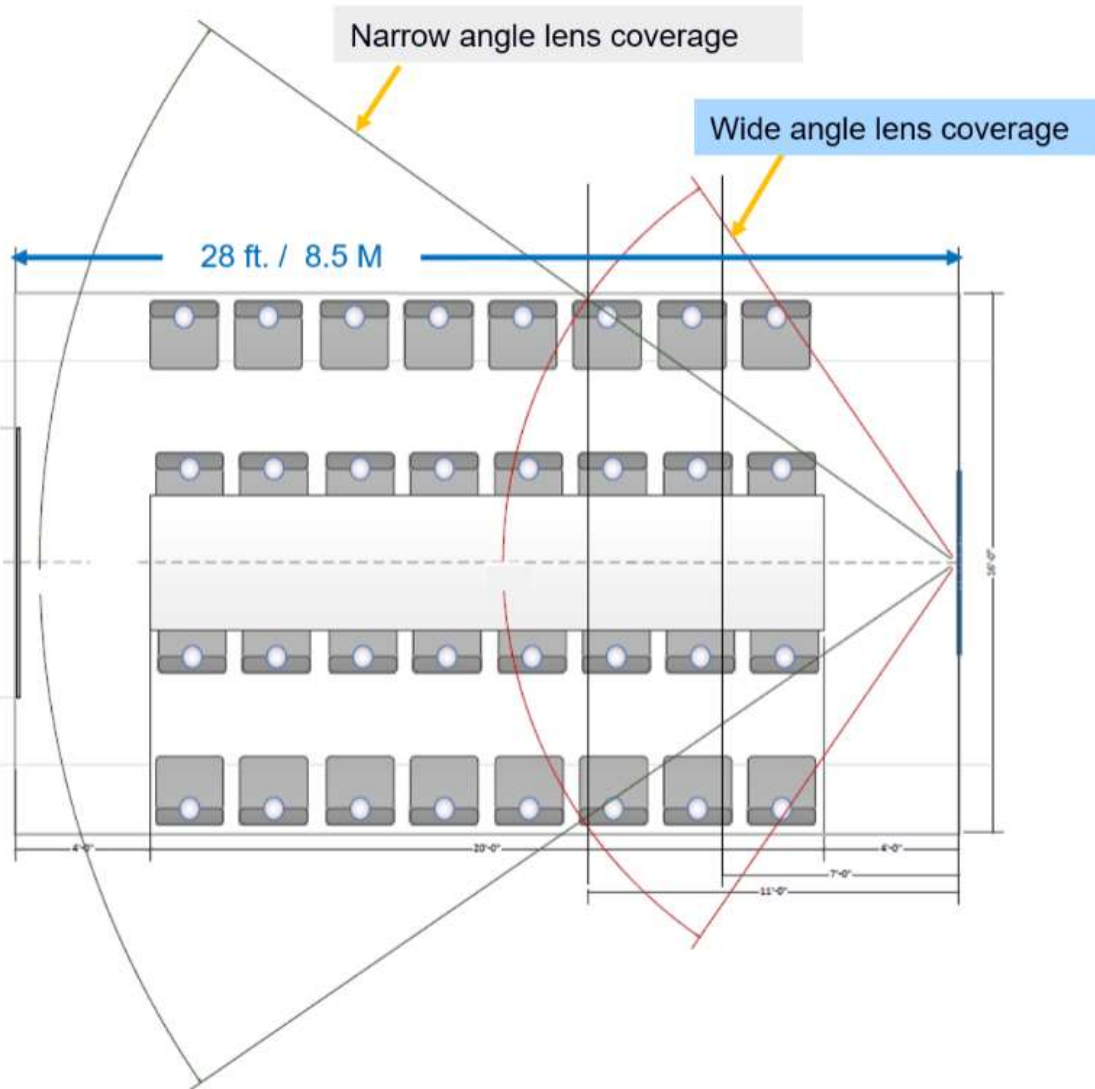
BIG THINGS COME IN SMALL PACKAGES

Small footprint, big experience
Dimensions:
321mm (W) x 102mm (H) x 89.1mm (D)
12.63" (W) x 4.02" (H) x 3.51" (D)

ADVANCED ANALYTICS

Participant counting and
CO2/VOC sensors *Coming
in future release





Designed for large rooms

- Dual lenses allow the Studio E70 to blanket the room in coverage.
- Provides optical image quality with digital capabilities.
- We can perform features with this design that optical zoom cameras cannot match.
- The ability for us to provide multiple video streams enables future capabilities

POLY DIRECTORAI

- Poly DirectorAI is the brain behind Poly's cutting-edge video experiences.
- It uses AI and machine learning technology to deliver real-time automatic transitions, framing and tracking that make everyone feel like they are in the room together.
- Poly DirectorAI perfects the hybrid working experience by seamlessly connecting the meeting room to the home office.

